

GREENDATA MANAGER SOFTWARE BROWSER EDITION

Environmental Compliance Data Management Reporting Tool Through an Internet Browser

Extend Green Data Compliance Management Across the Enterprise

Companies with multiple locations face a challenge in managing the compliance of **EU RoHS**, **EU REACH**, and other regulations and OEM requirements. **GreenData Manager Browser Edition (GDM-BE)** software provides an easy-to-use and affordable solution.

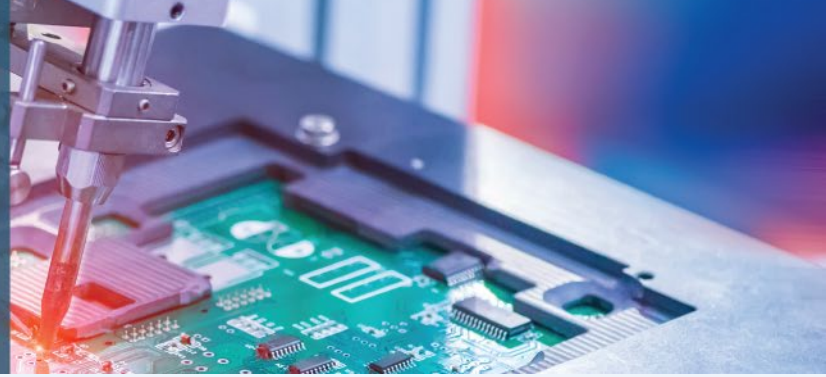
GDM-BE allows the sharing of a component database across the enterprise, and enables each company division to generate compliance reports – all with easy access through an Internet browser. Plus, the compliance database is stored securely behind your own company firewall on your own server.

GDM-BE includes two (2) software seats of **GreenData Manager** software to be installed directly on your company administrator's computer and company server, and five (5) concurrent browser user seats so you can extend green data management across your enterprise anywhere your divisions are located.

Feature Highlights

- Report completeness status on data or documents you have collected. **BONUS:** Sign up for our **Data Services**, and GreenSoft's data collection team will collect and validate the data from your suppliers for you!
- Report compliance status on all parts or Bills of Material (BOMs), and generate compliance reports for 27 built-in regulations, including **EU RoHS**, **EU REACH SVHC/Annex-17/Annex-14**, **California Proposition 65**, **China RoHS**. Or define your own rules per your customers' requirements.
- Extend **green data compliance management** across the enterprise through common internet browsers.
- **Import** the component compliance data through **Excel**, **IPC-1752** or **IPC-1752A XML**, or have GreenSoft collect the data and deliver to you through GreenSoft PartData XML format.
- **Schedule the generation of compliance reports** for one BOM or for all BOMs at a later date and time.
- **Schedule recurrence of the BOM-level compliance report** generation per day, week or month.
- **Import compliance data automatically** and import BOMs from ERP/PLM automatically (optional).
- Support direct page access to GDM-BE from your **ERP/PLM** screen.

GREENDATA MANAGER BROWSER EDITION (GDM-BE)



A Complete Compliance Management System

GreenData Manager Browser Edition (GDM-BE) is an intuitive and easy-to-use comprehensive compliance solution. To see the details on how **GDM-BE** can help you manage your product compliance data and documents, see screenshots from three essential **GDM-BE** pages below.

1) Item Master View

- View a high-level overview on collection and compliance status.
- View the compliance status and supporting documents on the same screen.
- Access supporting documents with the simple click of a hyperlink.

GreenData Manager BROWSER EDITION You are currently logged in as: **Lax Dahal**
User Count: 1/10 [\[Log Out\]](#) **GreenSoft**
Technology, Inc.

System | Manufacturers | Active Rules | Notifications | **Item Master** | Bill of Materials | SCIP Management | Reports | Tasks | Help

Item List
 Note: Parts filtered based on the following search conditions: None.
 Total Number of Parts: 69 [Download Excel](#)
 Now displaying page 1 of 2. Parts per page: 50 [Previous] [Next] [Show Extended Fields] Page #: 1 Go Return

● OK/Passed ● Not Ready/Failed ● Invalid Entry/Incomplete ● Document Expired ● Passed with Exemption ● Subpart Info Incomplete ● Subpart Failed ○ Not Applicable

#	Internal PN	Manufacturer	Manufacturer PN	Description	Requirement	MCV	Collection	Rule	California Proposition
1	0022-10034-22	ON SEMICONDUCTOR	TL431AIDG	IC, ADJUSTABLE PRE SHUNT REGULATOR, SO-8 Package, 30ppm Compliant					
2	0022-10034-22	TI	TL431AIDG4	IC, ADJUSTABLE PRE SHUNT REGULATOR, SO-8 Package, 30ppm Compliant					
3	0022-10036-005	MAXIM INTEGRATED PRODUCTS	MAX811TEUS+T	IC, MPU RESET, 3.08V 143-4, RoHS COMPLIANT					
4	0022-10036-005	STMICROELECTRONICS	STM811TW16F	IC, MPU RESET, 3.08V 143-4, RoHS COMPLIANT					
5	0022-10036-02	VENKEL	C0603C0G500-220JNP	CAPACITOR, CERAMIC, 5%, 0603, 22 PF, ROHS COMPLIANT					

Lifecycle Data:
 EOL - End of Life
 NRND - Not Recommended for New Design
 NPI - New Product Introduction

- Active/NPI: 56 [81.2 %]
- Obsolete/EOL/NRND: 5 [7.2 %]
- Unknown/Not Set: 8 [11.6 %]

Full Material Declaration (FMD) and Maximum Concentration Values (MCV)

- Parts with FMD (includes FMD + MCV): 60 [87.0 %]
- Parts with no FMD but has MCV: 3 [4.3 %]
- Unknown/Incomplete/Others: 6 [8.7 %]

Requirement Status:

- Passed: 58 [84.1 %]
- Failed: 11 [15.9 %]

Data Collection Status:

- Completed and Delivered: 61 [88.4 %]
- Delivered: 0 [0.0 %]
- Escalated to Customer: 4 [5.8 %]
- Pending at GreenSoft: 0 [0.0 %]
- Pending at Supplier: 0 [0.0 %]
- Stopped: 0 [0.0 %]
- Not Set: 4 [5.8 %]

CONTACT US

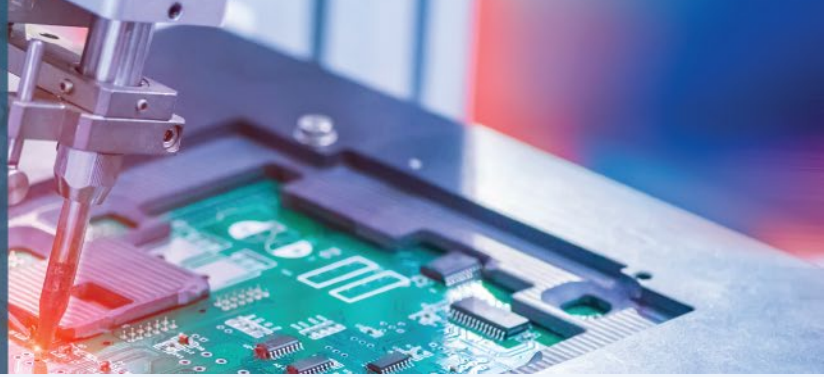
Learn More and Request a Demo

■ info@greensofttech.com

www.greensofttech.com

© 2023 GreenSoft Technology, Inc.

GREENDATA MANAGER BROWSER EDITION (GDM-BE)



2) Rules View

- View a list of regulations by selecting the “Active Rules” panel.
- Define your own rules per your customer requirements.
- Selected rules are applied per user so you can view only the regulations of interest to you.

Active Rules & Charts Rule Selection

Charts Rule Selection

Rule 1 for Charts: EU RoHS

Rule 2 for Charts:

Rule 3 for Charts:

Rule 4 for Charts:

Rule 5 for Charts:

Rule 6 for Charts:

[\[Save Selection\]](#) [\[Show All Rules\]](#) [\[Show Only Active Rules\]](#)

Active Rule Selection

Number of Active Rules selected: 11

Active ?	Rule Name	Category	Rule Description	Exemption Group Name	Help
<input checked="" type="checkbox"/>	California Proposition 65 (2022-02-25) (for analysis)		[14 Substance Groups + 871 Substances] Reference: Proposition 65 - Safe Drinking Water Act of 1986. (updated on Feb 25, 2022)		Link
<input checked="" type="checkbox"/>	California Proposition 65 (2023-01-27) (for analysis)		[14 Substance Groups + 874 Substances] Reference: Proposition 65 - Safe Drinking Water Act of 1986. (updated on Jan 27, 2023)		Link
<input checked="" type="checkbox"/>	EU POPs (2020-06-09)		[22 substances + 11 substance groups] Substances in Annex I to the regulation are subject to prohibition (with specific exemptions) on manufacturing, placing on the market and use, per Regulation (EU) 2019/1021 - on Persistent Organic Pollutants (POPs) updated on 9 June 2020. Could be used to validate EU PoP, updated on December 16, 2020.		Link
<input checked="" type="checkbox"/>	EU Regulation - 1005/2009 Ozone Depletion Substances - Quick Scan		EU Regulation of control Ozone Depletion Substances - GDM provides a quick scan on these ODS substances - released on Oct 31, 2009. Could be used to validate EU ODS, updated on March 29, 2017.		Link
<input checked="" type="checkbox"/>	EU RoHS		[6 Substance Groups] Restriction of Hazardous Substances - EU DIRECTIVE 2011/65/EU (RoHS-II)	RoHS Exemption Group	Link

CONTACT US

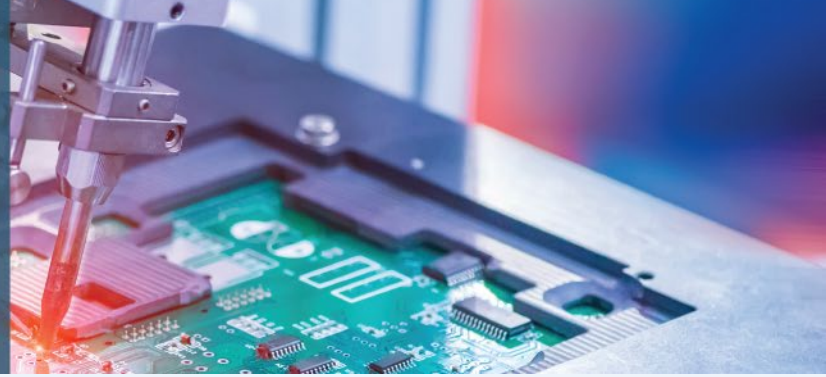
Learn More and Request a Demo

■ info@greensofttech.com

www.greensofttech.com

© 2023 GreenSoft Technology, Inc.

GREENDATA MANAGER BROWSER EDITION (GDM-BE)



3) BOM View

- View the compliance status of all BOMs or a subset of BOMs.
- View compliance reports on BOMS onscreen or download for distribution.
- Perform gap analysis on BOMs and complete the priority parts for designated BOMs.

BOM Summary Details

Filter Conditions: None

BOM IDs: (1) 1001-250, (2) AT100, (3) AT1015, (4) AT1500

Exemptions: R2-6c, R2-7a, R2-7c1
Rule 2 for Charts: China RoHS

Note: Parts maintained in GDM are having the unique combination of IPN + MFG + MPN.

Number of Unique Parts:	56 [100.0 %]
Number of Unique Manufacturers:	32
Number of Parts that match with Item Master:	52 [92.9 %]
Number of Parts not matching with Item Master:	4 [7.1 %]
Number of Parts with Part Mass specified:	49 [87.5 %]

Lifecycle Data:
EOL - End Of Life
NRND - Not Recommended for New Design
NPI - New Product Introduction

Active/NPI:	44 [84.6 %]
Obsolete/EOL/NRND:	5 [9.6 %]
Unknown/Not Set:	3 [5.8 %]

Full Material Declaration (FMD) and Maximum Concentration Values (MCV)

Parts with FMD (includes FMD + MCV):	48 [92.3 %]
Parts with no FMD but has MCV:	2 [3.8 %]
Unknown/Incomplete/Others:	2 [3.8 %]

Requirement Status:

Passed:	46 [88.5 %]
Failed:	6 [11.5 %]

Data Collection Status:

Completed and Delivered:	49 [94.2 %]
Delivered:	0 [0.0 %]
Escalated to Customer:	0 [0.0 %]
Pending at GreenSoft:	0 [0.0 %]
Pending at Supplier:	0 [0.0 %]
Stopped:	0 [0.0 %]
Dropped:	0 [0.0 %]

BOM Compliance Summary

Note: BOMs filtered based on the following search conditions: None.

Total Number of BOMs: 19 [Download Excel](#)

Now displaying page 1 of 1. BOMs per page: 50 [Previous] [Next] Page #: 1 Go Return

[100%] Display statuses that were computed by [Excluding] incomplete parts and [Including] 2nd source parts [Refresh]

● OK/Passed ● Not Ready/Failed ● Invalid Entry/Incomplete ● Document Expired ● Passed with Exemption □ Subpart Info Incomplete ■ Subpart Failed ○ Not Applicable

#	BOM ID	BOM Name	Project Name	Location	Revision	Exemptions	Statuses Last Computed on	Rule Status Summary	California Proposition 65 (2022-02-25) (for analysis)	California Proposition 65 (2023-01-27) (for analysis)
1	1001-250	CONTROL BOARD for MXX System		Pasadena		R2-6c, R2-7c1	6/15/2023 9:09:19 AM	●	●	●
2	AT100	Wireless Router	Advantage	Hawaii		R2-6c, R2-7a, R2-7c1	8/12/2023 10:14:50 AM	●	●	●
3	AT1015	Wireless Router	Advantage	Hawaii		R2-6c, R2-7a, R2-7c1	8/12/2023 10:15:13 AM	●	●	●
4	AT1500	Wireless Router	Advantage	Hawaii		R2-6c, R2-7a, R2-7c1	8/12/2023 10:14:58 AM	●	●	●
5	B16	Control Board M609 V2, DIV B from Location 2		Utah		R2-7a, R2-7c1	10/25/2022 1:19:42 PM	●	●	○
6	B17	Control Board M2290, DIV-B from Location 2		Utah		R2-6c, R2-7a, R2-7c1	10/25/2022 1:19:46 PM	●	●	○

CONTACT US

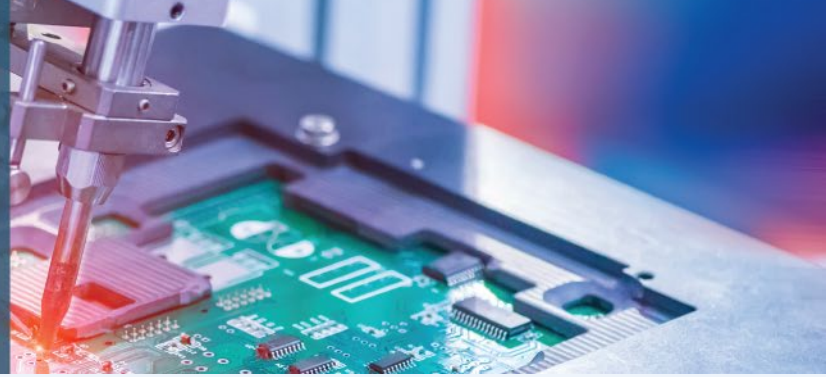
Learn More and Request a Demo

■ info@greensofttech.com

www.greensofttech.com

© 2023 GreenSoft Technology, Inc.

GREENDATA MANAGER BROWSER EDITION (GDM-BE)



Using GDM-BE

Generate Compliance Reports

- Generate compliance reports in real-time, or schedule the generation of compliance reports at a later date and time.
- Schedule the recurrence of compliance reports generation per day, week or month.
- Identify prohibited substances or reportable substances through compliance reporting.

Product Summary - REACH Reportable SVHC									
Note: BOMs filtered based on the following search conditions: None.									
Total Number of BOMs: 19 <input checked="" type="checkbox"/> Include 2nd Source <input type="checkbox"/> Show Only BOMs with Reportable SVHC <input type="checkbox"/> Show Item Details Download Excel									
Current Rule: REACH SVHC (235)									
Now displaying page 1 of 1. BOMs per page: <input type="text" value="50"/> [Previous] [Next] Page #: <input type="text" value="1"/> Go Return									
#	BOM ID	BOM Name	Project Name	Revision	Location	Computed Date	Substance Name	CAS Number	Max Reportable Concentration (ppm)
1	1001-250	CONTROL BOARD for MXX System			Pasadena	08/18/2023 12:00:53 AM	Lead	7439-92-1	39215.686
2	AT100	Wireless Router	Advantage		Hawaii	08/18/2023 12:00:53 AM	Lead	7439-92-1	74700.315
3	AT1015	Wireless Router	Advantage		Hawaii	08/18/2023 11:00:36 AM	Lead	7439-92-1	74700.315

ERP/PLM Interface

- Import the parts list or BOMs through auto or semi-auto interface module.
- Export the compliance status of a parts list or BOMs with documents through auto or semi-auto interface module.

System Details & Minimum Requirements

GDM-BE consists of 2 parts: GDM-WE (Workgroup Edition) and a Web Interface Module.

GDM-WE consists of a server and client, installed behind your company firewall.

CONTACT US

Learn More and Request a Demo

■ info@greensofttech.com

www.greensofttech.com

© 2023 GreenSoft Technology, Inc.

GREENDATA MANAGER BROWSER EDITION (GDM-BE)



System Details & Minimum Requirements (cont.)

The **Server** portion of **GDM-WE** contains:

- The component database that contains detailed compliance data and material composition data for each component and links to the associated supporting documents,
- The rule database with system-defined rules and user-defined rules,
- The BOM database that are imported by the GDM-WE clients or from Web Interface (through Internet browser) at GDM-BE.

The **Client** portion of **GDM-WE** can import component data information, create rules, import BOMs and generate compliance reports.

The Web Interface Module allows GDM-BE users to access the component database, rule database and BOM database through the Internet browser. GDM-BE users can access the compliance status of all components and BOMs and supporting documents. GDM-BE users can also generate compliance reports or schedule report generation at preset or future in a fixed interval.

Minimum Requirements

Server:

- Windows Server 2016/2019 (including R2)
- .NET Framework 4.8 or above
- CPU: 2GHz or above; RAM: 16GB or above; HD space: 200 GB or above
- (optional) Microsoft Office Excel 2007 or above (only if you have purchased Conflict Minerals module)

Client:

- Standard Browser Edge/Firefox/Chrome/Safari
- Adobe Acrobat Reader or other compatible PDF reader
- Microsoft Office tools (such as Excel) to view reports

GDM-BE Installation Requirements:

- .NET Framework 4.8 or above
- IIS with ASP.NET

GreenSoft
TECHNOLOGY, INC.



Corporate Headquarters North America/Europe

GreenSoft Technology, Inc.
155 S. El Molino, Suite 100
Pasadena, CA 91101 USA

- Tel: (323) 254-5961
- info@greensofttech.com

Asia/China/Taiwan/Japan

Jon Wu

- +886-920-618-568
- jwu@greensofttech.com

Finland/Sweden/Norway

RoHS Management Oy

- +358-44-981-2787
- sales_europe@rohsmangement.com

Israel

Rokah Technologies

- +972-3-9360688
- reuven@rokah-technologies.com